

# **UK Disability Services**

**From State Provision to  
Independent 'For Profit'  
Provision**

**Introducing Angela Gifford**

# Able Community Care



# Elizabeth I



# **The Dawn of Disability Care**

**Pre 1948**

# Statutory Services

## Evolution of The Poor Law

- **1601 – The Poor Law Act. Parishes to care for disabled people.**

# Statutory Services

## Evolution of The Poor Law

- **1601 – The Poor Law Act. Parishes to care for disabled people.**
- **1834 – An amendment to The Poor Law Act. Rise of the workhouses.**

# Henstead Workhouse Swainsthorpe, Norfolk.



# Statutory Services

## Evolution of The Poor Law

- 1601 – The Poor Law Act. Parishes to care for disabled people.
- 1834 – An amendment to The Poor Law Act. Rise of the workhouses.
- 1845 – All local councils to provide asylums.

# Bethel Street Hospital for the Insane, Norwich



# **The Modern Dark Age 1948 - 1989**

## **Origins of the Modern Care System**

# 1948 - 1989

- **Wartime injuries and disability awareness.**
- **1948 – The National Assistance (NA) Act.**  
**Which abolished The Poor Law Act which had existed since 1601.**
- **The Seebohm Committee's Report 1968.**

**Frederic Seebohm (created a life peer as The Rt.  
Hon. The Baron Seebohm in April 1972)**

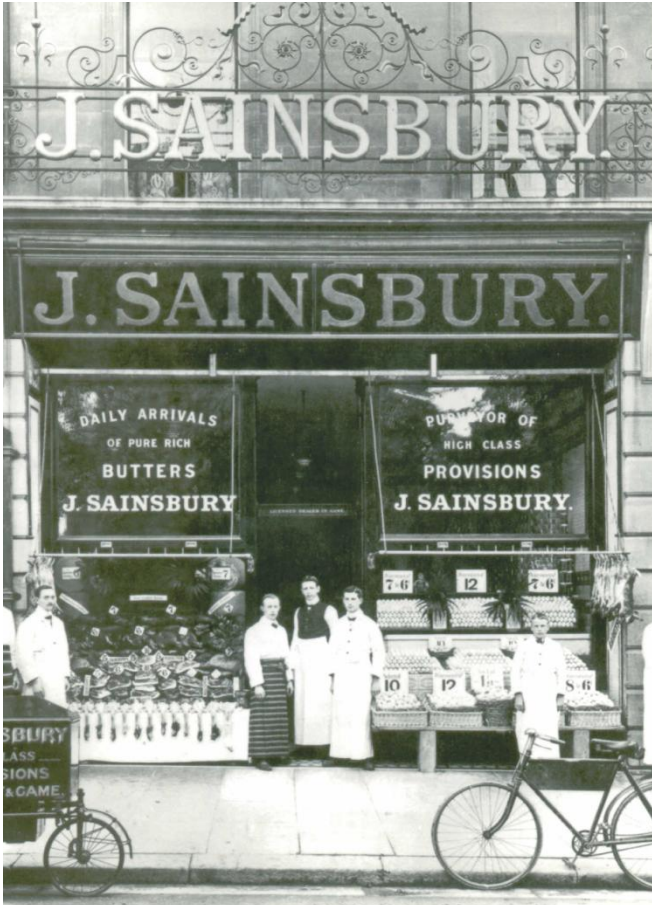


# Margaret Thatcher



# Sainsburys

1905



The Present Day



# 1948 - 1989

- **Wartime injuries and disability awareness.**
- **1948 – The National Assistance (NA) Act.**  
**Which abolished The Poor Law Act which had existed since 1601.**
- **The Seebohm Committee's Report 1968.**
- **1988 – The Griffiths Report.**
- **1989 – White Paper 1989, Caring for People.**

# The New World 1990 - 2009

- **1990 – The National Health Service and Community Care Act.**
- **2004 – Commission for Social Care Inspection.**
- **2009 – Care Quality Commission.**

# Trevor, 1995 - 2008

- Trevor was cared for in his own home from 1995 to 2008.
- Trevor had his own flat, car, live-in carers and his own living expenses.
- He was able to enjoy caravan holidays, London shows and often went to car boot markets.
- He was able to visit his mother in her old folks home and to visit the cemetery to pay his respects to his father.

# Trevor (1949 – 2008) and Sue, his carer for 12 years



# The Hiccup

**What could go wrong?**

# Four Levels of Disability Criteria

- 1. Low dependency**
- 2. Medium dependency**
- 3. Substantial dependency**
- 4. Critical dependency**

# The Vision

- Customer power...

